



- Stainless steel
- Magnetic level switch

The Condensate collecting tank (KSB-S) with release valve offers different connection possibilities (from top or sideways) providing an easy integration into existing systems. The level switch operates according to the principle of a float with magnetic transmission. The float is lifted inside the vessel due to the rising fluid level; subsequently, it actuates a reed contact as a result of the magnetic field of the permanent magnet situated in the float. Depending on the mounting position of the float switch, the reed contact acts normally opened or normally closed. The Condensate collecting tank is suited for nearly all types of fluid media that are non-hostile to the material.



Digital form at:
www.cgs-company.de/downloads/MDZ_E_D_KSB-S.pdf

MDZ_E_D_KSB-S_1.2

1/4

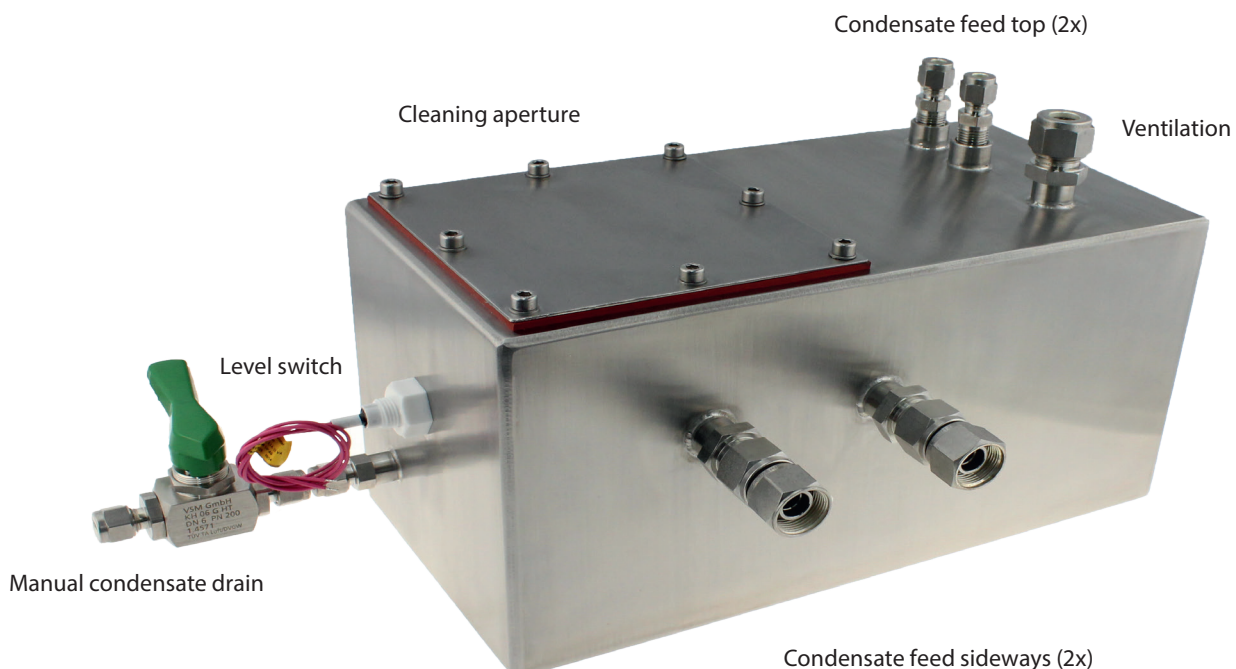
Technical data

• Max. Operating temperature:	5°C to 40°C	• Material:	Housing:	Stainless steel 1.4301
• Max. Internal pressure (Housing):	1 bar		Sealing:	Silicon (3 mm)
• Connections:	Condensate feed top: G1/4"		Level switch:	Polypropylene
	Condensate feed sideways: 12 mm	• Connection cable:		0.3 m PE-cord
	Ventilation: 12 mm	• Contact:		50 V AC/DC
	Tap connection: 6 mm	• Max. Nominal current:		0.5 A
• Max. Filling volume:	3.6 l	• Min. Media density:		0.7 kg/l
• Protection type:	IP 20	• Measurements (W x H x D) tank:		300 x 150 x 150 mm
• Weight:	4.3 kg		incl. connections:	428 x 189 x 189 mm

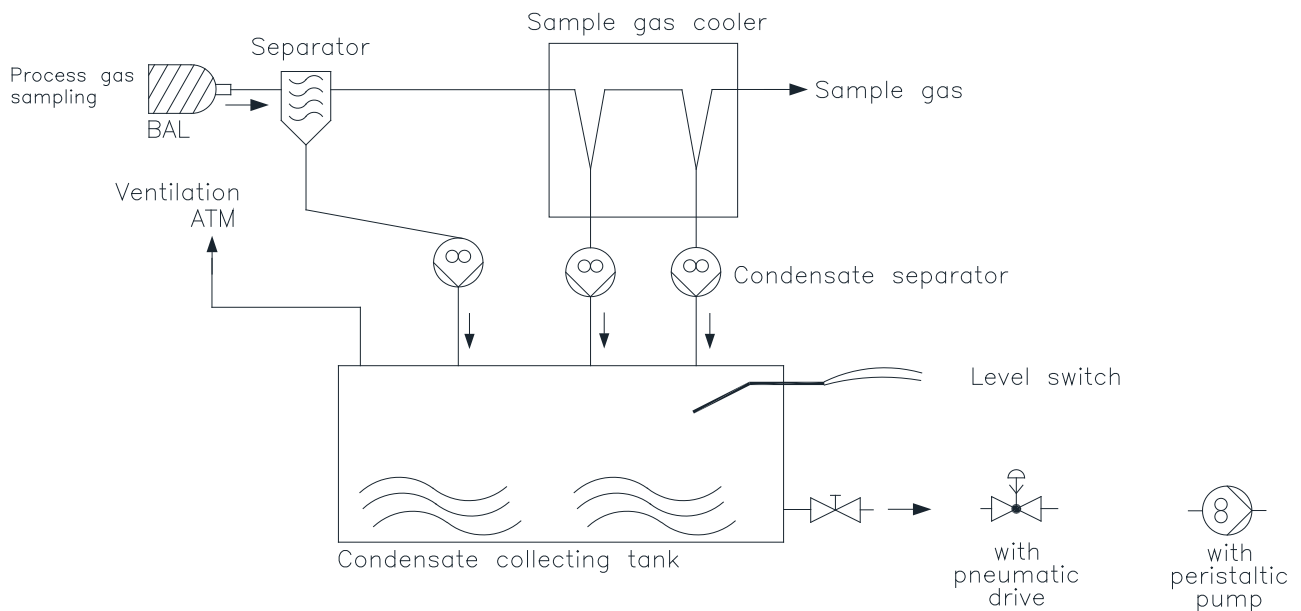
Option

• Special dimensions:	On request
• Inlet and outlet:	On request

Design graphic



Application example



Application:

The Condensate collecting tank has been specially made for sample preparation in sample analysis when condensation may occur in large amounts with gas mixtures. (E. G. Sample gas cooler, Stripper, Condensate separator, Condensate trap, etc...)

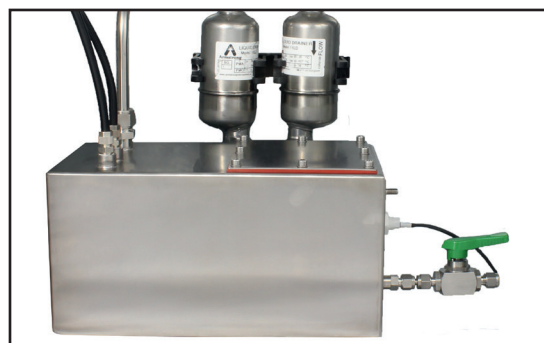
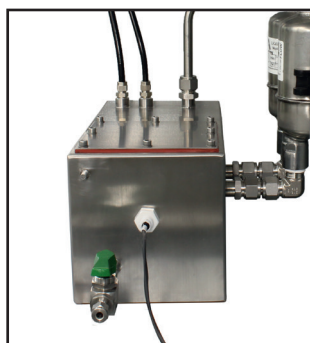
The Condensate tank can be drained manually by the ball valve. At higher condensation a pneumatic drive, peristaltic pump or condensation drain will be used instead of a ball valve.

To ensure a secure monitoring of the fill-level a level switch with alarm contact can be mounted.

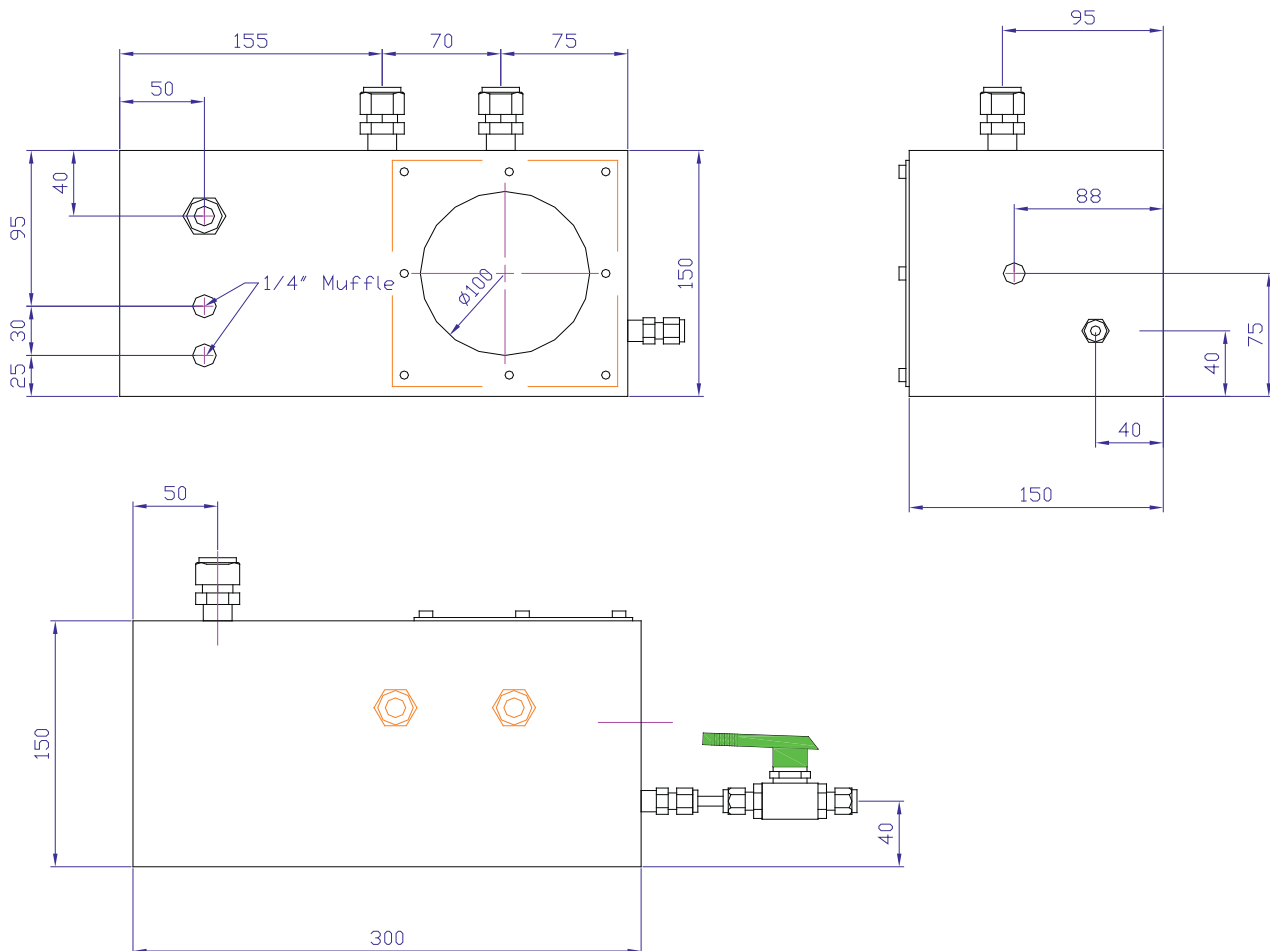
Due to the choice of materials and the welded stainless steel incl. weld-on connecting pieces and ferrule fittings the Condensate collecting tank is very versatile at process analytic.

The Condensate tank has a cleaning aperture sealed with silicon gasket and screwed with Allen screws for the purpose of maintenance. It is intended for wall or floor mounting whereby a horizontal installation position should be noticed.

The arrangement and dimensioning of the in- and outlet fittings as well as the level switch can be adapted to the local conditions of the sample preparation.



Drawings



Order numbers

Product:

- Condensate collecting tank KSB-S
(incl. ball valve, level switch and Condensate feed 6 mm)

Order no.:

1030828

Accessories / Spare parts:

- | | |
|---|---------|
| • Miniature plastic float switch; R 1/4" AG | 1017413 |
| • Seal disk for cleaning aperture | 1013155 |
| • Ball valve | 1021988 |