

- Universal use
- Easy flange mounting
- Easy to maintain
- Large filter surface
- Low dead volume
- Options
 - Back flush system
 - Calibration gas switch
 - Temperature control

The usage of the gas sample probe MGS-010_S is the continuous sample take off from dust loaded, high temperature and/or humid processes. This device is applicable for non hazardous areas. The maximum operation temperature is 180°C.

The mechanical design of the sample probe MGS-010_S is produced for user- and maintenance friendly assembling. The sample take off tube is welded at the mounting flange and depending on the stack size it's individual applicable to a maximum length of 1.0 meter.

There's a heated stainless steel filter body inside the isolated stainless steel cabinet which is equipped with a large ceramic filter. The filter design is made of two layers. There is a fine porous ceramic diaphragm layer applied to the rough porouse ceramic carrier material. The filter size of 0.5 micron allows a very high efficiency.

The sample gas flows through the filter element from out- to inside. The two layers set-up ensures that particles stuck in the filter element and not in the filter. Optional a back flush function can be added which purges the particles back to the process. Because of the innovative construction it's possible to change the filter element in heated status.



Digital form at:
www.cgs-company.de/downloads/MDZ_E_D_MGS-010_S.pdf

Technical data

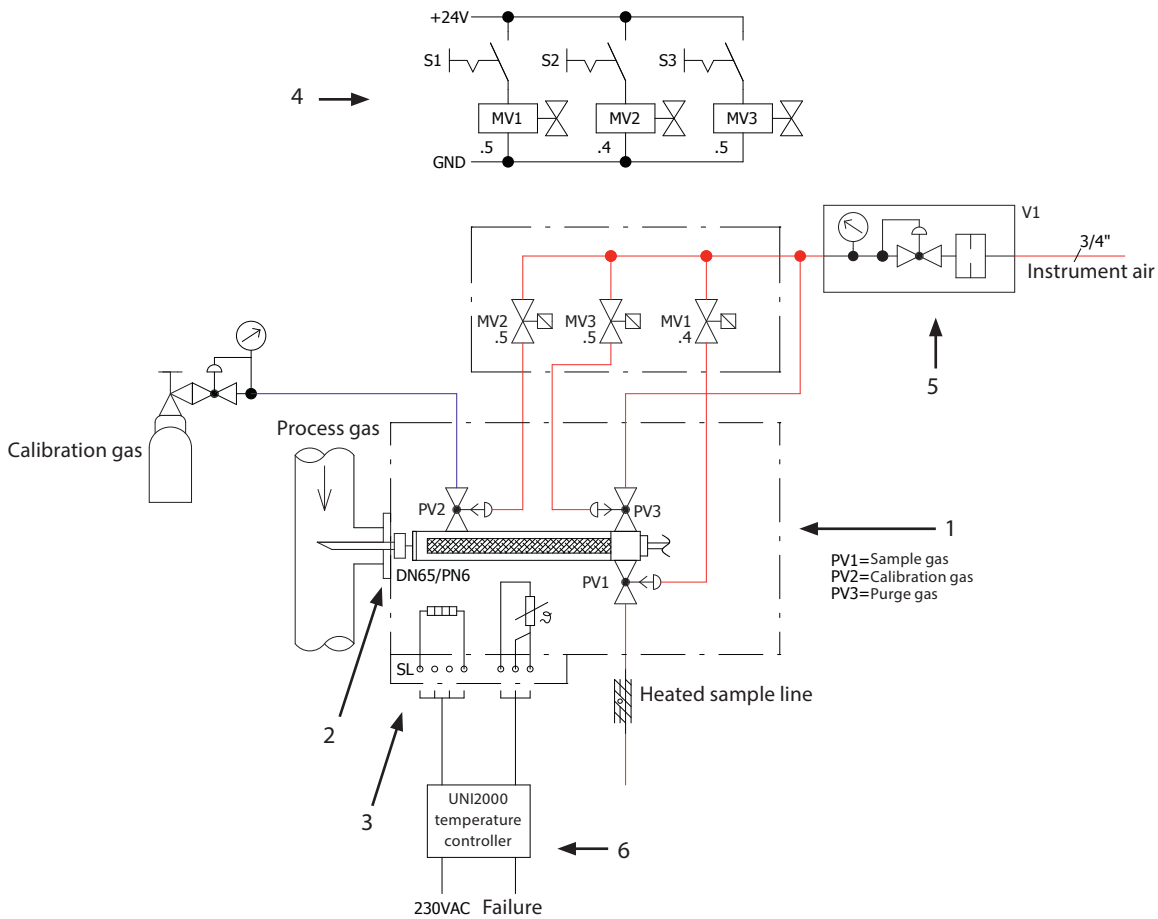
- Weather protection hood: S235JR
- Type of protection: IP54
- Chassis material: 1.4301
- Sample probe flange seal material: Frenzelit Novatec Premium
- Sample take off tube / pre filter: 1.4571
- Sample take off pressure max.: 0.4 - 3.5 bar (abs)
- Ambient temperature: -20°C ... +60°C
- Filter volume: 60 cm³
- Filter size: 0.5 µm standard
- Temperature adjustment: 0°C - 290°C
- Readiness for operation: after 60 min.
- Fitting gas outlet: 8 mm
- Fitting back flush / calibration gas: 6 mm hose fitting
- Power supply: 230 V / 50 Hz
- Electrical connection: Terminals max. 2.5 mm², Cable gland M20
- Electrical device standard: EN 61010, EN 60519-1
- Mounting flange: DN65 PN6
- Mounting flange material: 1.4571
- Internal heating capacity: 200 W
- Weigth: ca. 16 kg

Options

- Pneumatic ball valve for sample gas
- Pneumatic ball valve for calibration gas
- Pneumatic ball valve for purge gas
- Enlarged filter surface
- Temperature sensor type K, type J, Pt100
- Temperature monitoring
- Mechanical ball valves
- External temperature controller UNI2000
- Control air preparation with control valves sample-, calibration- and purge gas

Drawing

Sample take off with probe, control unit



Legend sample take off with probe, control unit

- 1 Sample Gas Probe Type MGS-010_S
- 2 Flange VA DN65 PN6 outside of angled base plate
- 3 Terminal box
- 4 Control unit for sample gas probe | Option with power supply and control switch
- 5 Instrument air unit
- 6 Temperature controller Type UNI2000

