



Options

- **Electrical connection:** soldering lug; cable
- **Gas connection:** double ferrule fittings:
2 mm; 3 mm; 6 mm; 1/16"; 1/8"; 1/4"
hose: 4.3 mm; 6 mm
- **Filter:** 20 µm; 50 µm

The single solenoid valve block 3/2-way made of 1.4305 is used for the switching between two gas sources.

For example air from the catalytic combustion air supply or from the gas cylinders. The valve is a rapid switching 3/2-way solenoid valve, which have a very long life time – tested over 500 million switching operations.

Technical data

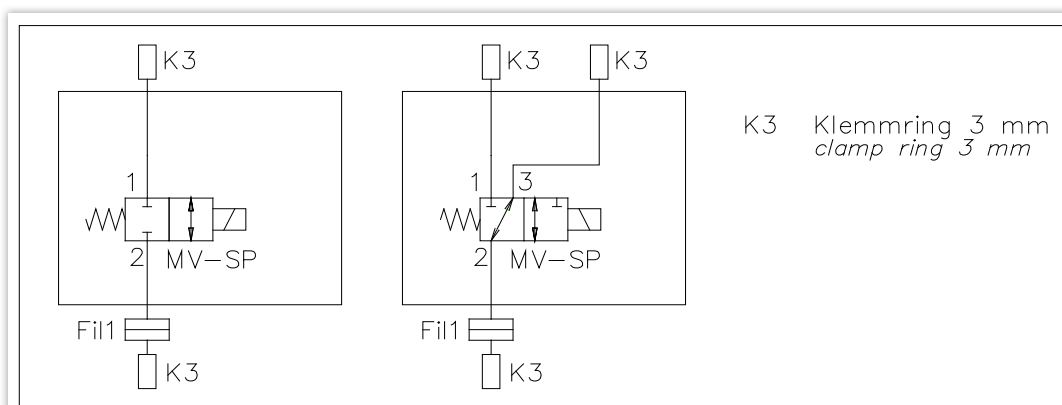
Valve:

- **Type:** 3/2-ways solenoid valve NC
- **Voltage:** 24 V DC
- **Power consumption:** 1.5 Watt
- **Response time:** < 10 ms
- **Orifice:** 1.25 mm
- **Flow coefficient K_v :** 0.025 m³/h
- **Max. gas pressure:** 7.0 bar NC; 3.5 bar NO
- **Ambient temperature:** -20°C to + 60°C
- **Gas temperature:** 0°C to 60°C
- **Housing:** 1.4016
- **Seal material:** FKM
- **Type of protection:** IP40
- **Electr. connection:** soldering lug or cable tail
(length 700 mm)
- **Materials of wetted parts:** 1.4016; FKM; Polybutylene Terephthalate (PTB)

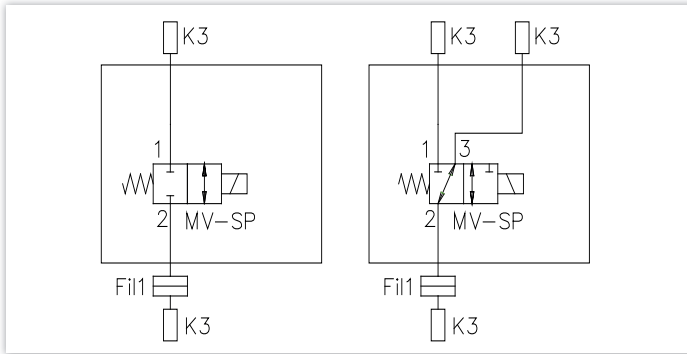
Solenoid valve block:

- **Material:** 1.4305
- **Dimensions (W x H x D):** 100 x 115 x 50 mm
- **Weight:** ca. 0.38 kg

Application example



Configuration standard solenoid valve block

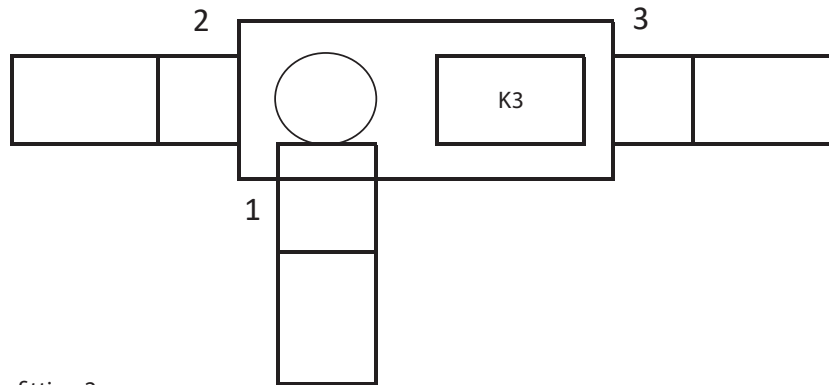


Date:

Company:

Name:

Project:



- B: Blind flange
- K2: Double ferrule fitting 2 mm
- K3: Double ferrule fitting 3 mm
- K6: Double ferrule fitting 6 mm
- K16: Double ferrule fitting 1/16"
- K18: Double ferrule fitting 1/8"
- K14: Double ferrule fitting 1/4"
- R4: Hose 4.3 mm
- R6: Hose 6 mm

- WA: Angle adapter
- RV: Check valve
- F20: Filter 20 µm
- F50: Filter 50 µm

- S: 3/2-ways
- SK: 3/2-ways with cable

- STD: Standard valve
- H: For moisture analysis
- O: For oxygen application
- Y: For moisture analysis +
For oxygen application

Remarks:

- Adapter board with LED and anti-surge diode
- Anti-surge diode



Fillable form at:
www.cgs-company.de/downloads/MDZ_E_D_MVB-32W.pdf