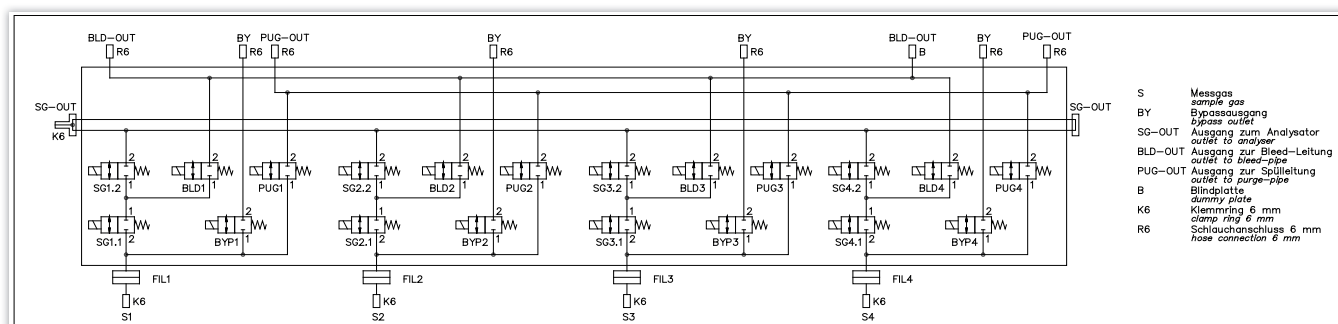


The solenoid valve block DBB-S2 is a multidimensional valve block made of 1.4305. It is designed for the US market and has a double block and bleed stream selection. This means that two block valves are in series and in between there is a tube to the bleed valve. In case of a leakage of the block valves, the leakage flow is vented out of the system. Furthermore, the solenoid valve block has for every gas inlet a continuous bypass and a quick pre purging; both tubes are equipped with solenoid valves. All valves are rapid switching solenoid valves, which have a very long life time – tested over 500 million switching operations. The connections for the individual sample gases and the calibration gases are made by flange adapters, which have integrated sinter metal filters.

Options

- Number of gas inlets: 6 or 8
- Type of valve: standard; for oxygen application; for moisture analysis
- Electrical connection: soldering lug; cable
- Gas connection: double ferrule fittings: 2 mm; 3 mm; 6 mm; 1/16"; 1/8"; 1/4"
hose: 4.3 mm; 6 mm
- Filter: 20 µm; 50 µm

Application example



Technical data

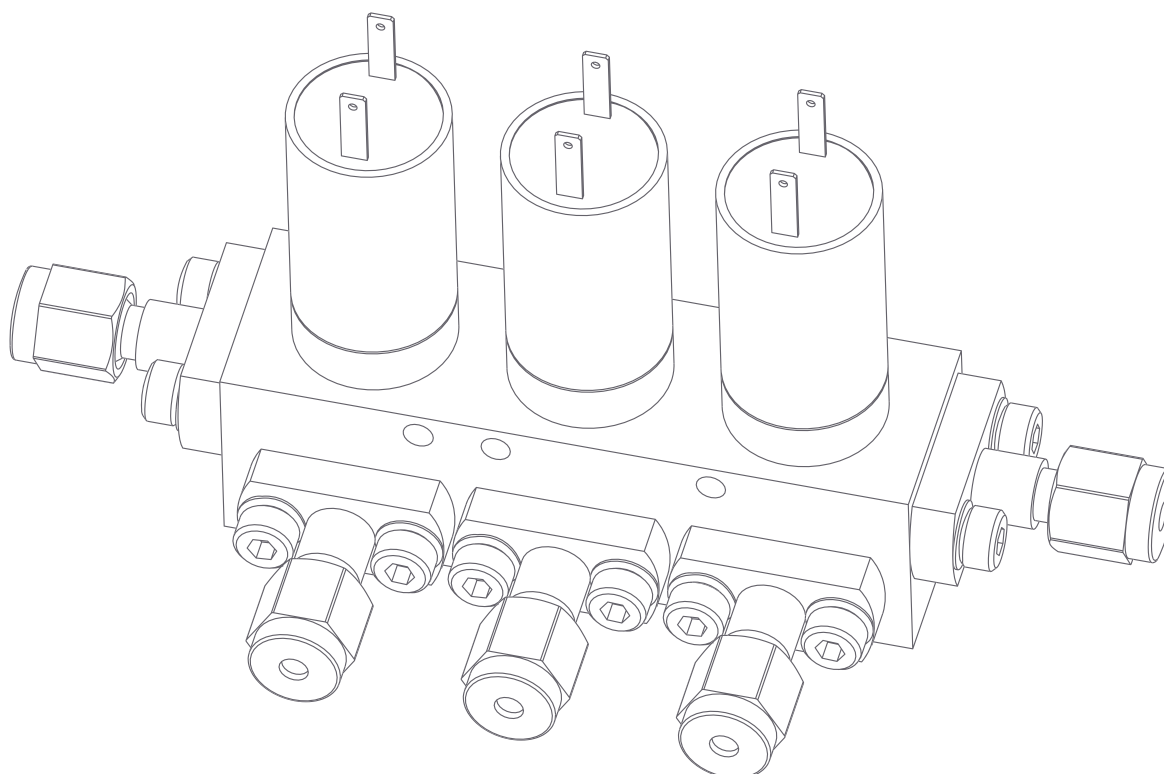
Valve:

- Type: 2/2 - ways solenoid valve NC
- Voltage: 24 VDC
- Power consumption: 1.5 Watt
- Response time: < 10 ms
- Orifice: 1.25 mm
- Flow coefficient K_v : 0.025 m³/h
- Max. gas pressure: 7.0 bar for NC
- Ambient temperature: -20°C to +60°C
- Gas temperature: 0°C to 60°C
- Housing: 1.4016
- Seal material: FKM
- Type of protection: IP40
- Electrical connection: soldering lug or cable tail (length 700 mm)
- Materials of wetted parts: 1.4016; FKM
- Special models:
 - for oxygen application
 - for moisture analysis
 - for oxygen application and moisture analysis

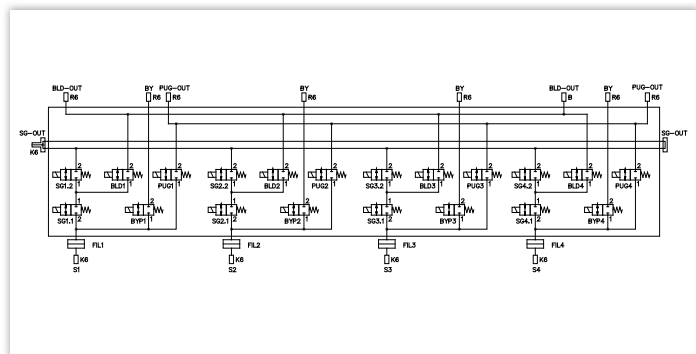
Solenoid valve block:

For 8 sample gas inlets with solenoid valves and connections

- Material: 1.4305
- Dimensions (W x H x D): 260 x 140 x 140 mm
- Weight: 6 kg



Configuration standard solenoid valve block



Date:

Company:

Name:

Project:

- B: Blind flange
 K2: Double ferrule fitting 2 mm
 K3: Double ferrule fitting 3 mm
 K6: Double ferrule fitting 6 mm
 K16: Double ferrule fitting 1/16"
 K18: Double ferrule fitting 1/8"
 K14: Double ferrule fitting 1/4"
 St4: Push-In 4.0 mm
 St6: Push-In 6.0 mm
 R6: Hose 6 mm
 WA: Angle adapter

- F20: Filter 20 µm
 F50: Filter 50 µm

- STD2: 2/2-ways Standard valve
 H2: 2/2-ways for moisture analysis
 O2: 2/2-ways for oxygen application
 Y2: 2/2-ways for moisture analysis +
 for oxygen application



Fillable form at:
www.cgs-company.de/downloads/MDZ_E_D_MVB-DBB-S2.pdf

WA									A	WA
	SG1.2	SG2.2	SG3.2	SG4.2	SG5.2	SG6.2	SG7.2	SG8.2		

PUG-OUT	BLD1	BLD2	BLD3	BLD4	BLD5	BLD6	BLD7	BLD8	PUG-OUT
BLD-OUT									BLD-OUT

WA									C	WA
	PUG1	PUG2	PUG3	PUG4	PUG5	PUG6	PUG7	PUG8		

SG-OUT									D	WA
--------	--	--	--	--	--	--	--	--	---	----

Remarks:

☐ Adapter board with LED and anti-surge diode

Spare parts

Order No.	Article
1026309	Sintered metal frit set (10 pcs.); pore size 50 µm
1026308	Sintered metal frit set (10 pcs.); pore size 20 µm
1026311	O-ring set; flange 24 (10 pcs.); FKM 6.00x2.00 mm
1027879	Flange set; flange 24; 6 mm Tube Fitting
1027882	Flange set; flange 24; 3 mm Tube Fitting
1027885	Flange set; flange 24; 2 mm Tube Fitting
1027881	Flange set; flange 24; 1/4" Tube Fitting
1027883	Flange set; flange 24; 1/8" Tube Fitting
1027886	Flange set; flange 24; 1/16" Tube Fitting
1027898	Flange set; flange 24; Hose 4.3 mm
1027900	Flange set; flange 24; Hose 6 mm
1027902	Blind flange set for flange 24
1010547	Blind screw; instead of screw in solenoid valve
1027694	Solenoid valve; 2-ways; 24 VDC; FKM; with soldering lug
1027695	Solenoid valve; 2-ways; 24 VDC; FKM; with connection cable 700 mm
1024302	Solenoid valve; H2O; 2-ways; 24 VDC; FKM; with soldering lug
1024306	Solenoid valve; H2O; 2-ways; 24 VDC; FKM; with connection cable 700 mm
1030681	Solenoid valve; O2; 2-ways; 24 VDC; FKM; with soldering lug
1030682	Solenoid valve; O2; 2-ways; 24 VDC; FKM; with connection cable 700 mm
1030685	Solenoid valve; O2; 2-ways; 24 VDC; FKM; with soldering lug
1030686	Solenoid valve; O2; 2-ways; 24 VDC; FKM; with connection cable 700 mm
1027696	Solenoid valve; 3/2-ways; 24 VDC; FKM; with soldering lug
1019762	Solenoid valve; 3/2-ways; 24 VDC; with connection cable 300 mm
1024193	Solenoid valve; H2O; 3/2-ways; 24 VDC; with soldering lug
1024308	Solenoid valve; H2O; 3/2-ways; 24 VDC; with connection cable 300 mm
1030683	Solenoid valve; O2; 3/2-ways; 24 VDC; FKM; with soldering lug
1030684	Solenoid valve; O2; 3/2-ways; 24 VDC; with connection cable 300 mm
1030687	Solenoid valve; H2O; O2; 3/2-ways; 24 VDC; FKM; with soldering lug
1030688	Solenoid valve; H2O; O2; 3/2-ways; 24 VDC; with connection cable 300 mm
1030849	O-ring set screw in solenoid valve (2*10 pcs.); FKM 14.00x1.78 mm; FKM 6.60x1.50 mm
1017821	Adapter board; LED module; 24 V
1030851	Free-wheeling diode set (10 pcs.) for solenoid valve
1017105	Hook spanner for screw in solenoid valve; DIN 1810
1027187	Socket wrench for screw in solenoid valve
1016639	Check valve