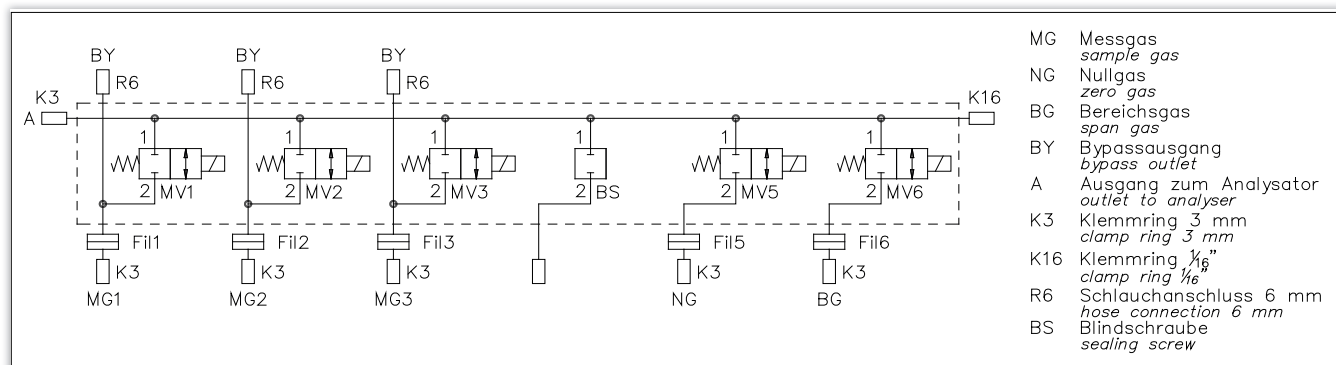


The standard solenoid valve block compact is a further development of the standard block. Due to the new design the solenoid valves are mounted on opposite sides of the block. This reduces the length of the block by half. The solenoid valve block can now be equipped with up to 20 gas inlets. New is also the continuously purging of the solenoid valves. These rapid switching solenoid valves have a very long life time – tested over 500 million switching operations. The connections for the individual sample gases and the calibration gases are made by flange adapters, which have integrated sinter metal filters. In addition the sample gas inlet can be equipped with a continuously bypass to minimize the total response time. The valve block has a common tubule which is connected to the analyzer. The other side of the tubule has a blind flange. Alternatively at low concentrations this flange will be changed by a capillary for a very low split flow.

Options

- Number of valves: up to 20 valves
- Type of valve: standard; for oxygen application; for moisture analysis
- Electrical connection: soldering lug; cable
- Split flow: yes/no
- Bypass: per sample stream
- Check valve: per outlet
- Gas connection: double ferrule fittings: 2 mm; 3 mm; 6 mm; 1/16"; 1/8"; 1/4"
hose: 4.3 mm; 6 mm
- Filter: 20 µm; 50 µm

Application example



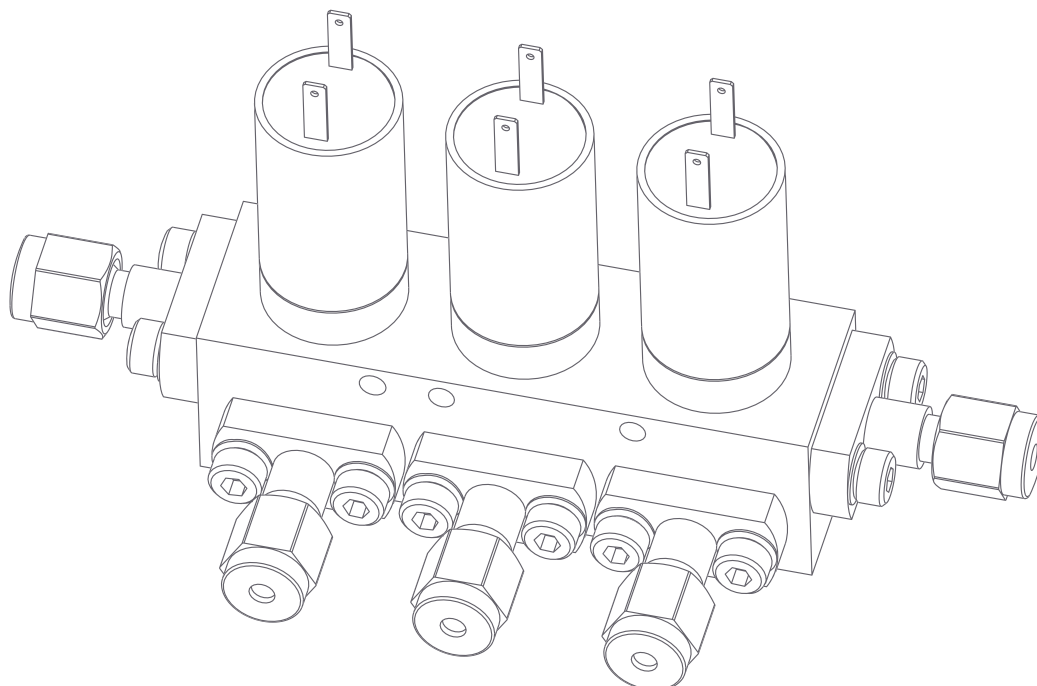
Technical data

Valve:

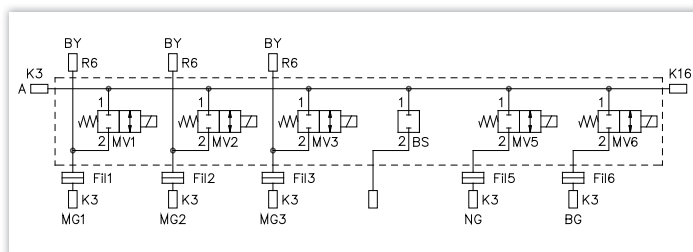
- Type: 2/2 - ways solenoid valve NC
- Voltage: 24 V DC
- Power consumption: 1.5 Watt
- Response time: < 10 ms
- Orifice: 1.25 mm
- Flow coefficient K_v : 0.025 m³/h
- Max. gas pressure: 7.0 bar for NC
- Ambient temperature: -20°C to + 60°C
- Gas temperature: 0°C to 60°C
- Housing: 1.4016
- Seal material: FKM
- Type of protection: IP40
- Electrical connection: soldering lug or cable tail (length 700 mm)
- Materials of wetted parts: 1.4016; FKM
- Special models:
 - for oxygen application
 - for moisture analysis
 - for oxygen application and moisture analysis

Solenoid valve block:

- Material: 1.4305
- Dimensions (W x H x D): (depending on configuration)
 - 6-fold with solenoid valves and connections = 100 x 135 x 75 mm
 - 10-fold with solenoid valves and connections = 150 x 135 x 75 mm
- Weight:
 - 6-fold with solenoid valves and connections = ca. 1.19 kg
 - 10-fold with solenoid valves and connections = ca. 1.76 kg



Configuration standard solenoid valve block

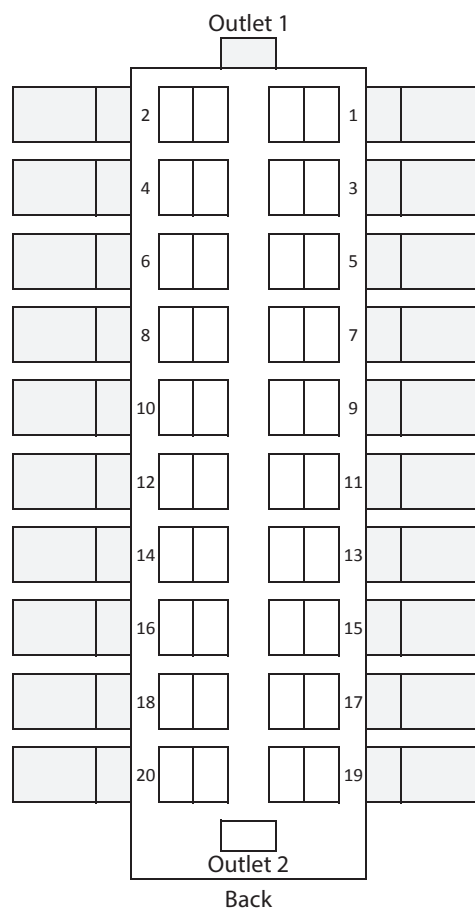
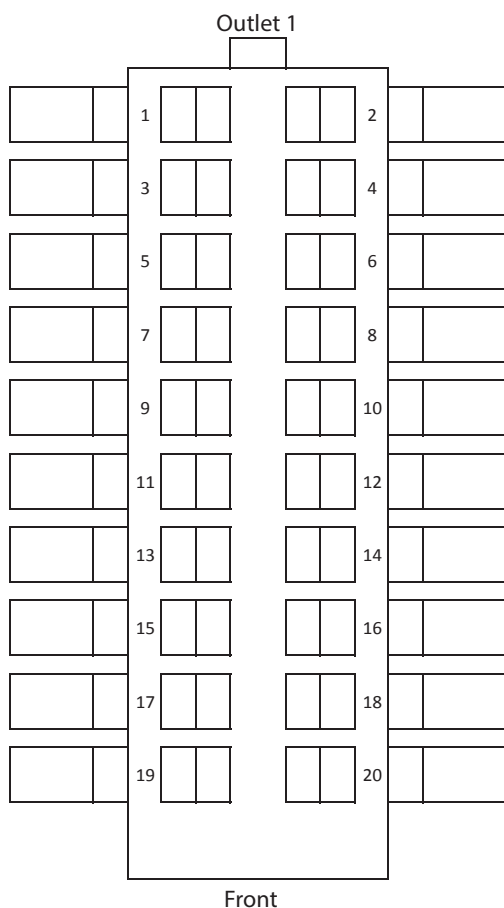


Date:

Company:

Name:

Project:



B: Blind flange
 K2: Double ferrule fitting 2 mm
 K3: Double ferrule fitting 3 mm
 K6: Double ferrule fitting 6 mm
 K16: Double ferrule fitting 1/16"
 K18: Double ferrule fitting 1/8"
 K14: Double ferrule fitting 1/4"
 R4: Hose 4.3 mm
 R6: Hose 6 mm

WA: Angle adapter
 F20: Filter 20 µm
 F50: Filter 50 µm
 BS: Blind screw
 S: 2/2-Ways
 SK: 2/2-Ways with cable

STD: Standard valve
 H: For moisture analysis
 O: For oxygen application
 Y: For moisture analysis +
 For oxygen application

Remarks:

- ☐ Adapter board with LED and anti-surge diode
☐ Anti-surge diode



Fillable form at:
www.cgs-company.de/downloads/MDZ_E_D_MVB-K.pdf

Spare parts

Order No.	Article
1026309	Sintered metal frit set (10 pcs.); pore size 50 µm
1026308	Sintered metal frit set (10 pcs.); pore size 20 µm
1026311	O-ring set; flange 24 (10 pcs.); FKM 6.00x2.00 mm
1027879	Flange set; flange 24; 6 mm Tube Fitting
1027882	Flange set; flange 24; 3 mm Tube Fitting
1027885	Flange set; flange 24; 2 mm Tube Fitting
1027881	Flange set; flange 24; 1/4" Tube Fitting
1027883	Flange set; flange 24; 1/8" Tube Fitting
1027886	Flange set; flange 24; 1/16" Tube Fitting
1027898	Flange set; flange 24; Hose 4.3 mm
1027900	Flange set; flange 24; Hose 6 mm
1027902	Blind flange set for flange 24
1010547	Blind screw; instead of screw in solenoid valve
1027694	Solenoid valve; 2-ways; 24 VDC; FKM; with soldering lug
1027695	Solenoid valve; 2-ways; 24 VDC; FKM; with connection cable 700 mm
1024302	Solenoid valve; H2O; 2-ways; 24 VDC; FKM; with soldering lug
1024306	Solenoid valve; H2O; 2-ways; 24 VDC; FKM; with connection cable 700 mm
1030681	Solenoid valve; O2; 2-ways; 24 VDC; FKM; with soldering lug
1030682	Solenoid valve; O2; 2-ways; 24 VDC; FKM; with connection cable 700 mm
1030685	Solenoid valve; O2; 2-way; 24 VDC; FKM; with soldering lug
1030686	Solenoid valve; O2; 2-ways; 24 VDC; FKM; with connection cable 700 mm
1027696	Solenoid valve; 3/2-ways; 24 VDC; FKM; with soldering lug
1019762	Solenoid valve; 3/2-ways; 24 VDC; with connection cable 300 mm
1024193	Solenoid valve; H2O; 3/2-ways; 24 VDC; with soldering lug
1024308	Solenoid valve; 3/2-ways; 24 VDC; with connection cable 300 mm
1030683	Solenoid valve; O2; 3/2-way; 24 VDC; FKM; with soldering lug
1030684	Solenoid valve; O2; 3/2-ways; 24 VDC; with connection cable 300 mm
1030687	Solenoid valve; H2O; O2; 3/2-ways; 24 VDC; FKM; with soldering lug
1030688	Solenoid valve; H2O; O2; 3/2-ways; 24 VDC; with connection cable 300 mm
1030849	O-ring set screw in solenoid valve (2*10 pcs.); FKM 14.00x1.78 mm; FKM 6.60x1.50 mm
1017821	Adapter board; LED module; 24V
1030851	Free-wheeling diode set (10 pcs.) for solenoid valve
1017105	Hook spanner for screw in solenoid valve; DIN 1810
1027187	Socket wrench for screw in solenoid valve
1016639	Check valve